

Low Dose, High-Strength Sludge Dewatering Solution by ROPUR RPI® for Breaking Down Struvite Scaling

BACKGROUND

Wastewater treatment plants (WWTP) often experience a disruption in their operations due to the complex chemical reactions in the water cleaning process, further lowering the plant efficiency down to a critical level. A common cause is the rapid formation of rock-solid blue cement known as Struvite crystals that affects all metal surfaces during sludge dewatering.

THE CHALLENGE

At the ARA Wüeri in Regensdorf, Switzerland, after digestion, a centrifuge dewateres the produced sludge. Following CO₂ degassing, the change in composition and physicochemical properties rapidly promotes the Struvite scale formation on all metallic surfaces during this process. Furthermore, Struvite scaling is rapid and furtive and creates an underestimated risk for failure and a severe impact on operational costs. Numerous testing with chemicals to prevent or impede the scaling inside and after the centrifuge could not eliminate the problem.

ARA Wüeri teamed up with a research group at the FHNW and Toray Membrane Europe AG (TMEU) to investigate the scaling and find a solution. TMEU introduced ROPUR RWI®-8000, an innovative water treatment chemical that specifically targets Struvite scaling. The team would test to determine the scale inhibitor's effectiveness in maintaining the plant's stable operations and minimize any hidden maintenance costs associated with equipment replacements.

DEWATERING PROCESS

Dissolved CO₂ is aggressively released in the centrifuge area because:

1. The tenside injected (dewetting agent) slightly reduces the CO₂ solubility in water;
2. The salt's local micro-concentration (when TS particles separate from the fluid) triggers an unstable state in the dissolved CO₂ gas;
3. The centrifuge's mechanical movements (pressure changes) optimize the gas exchange (with O₂ and N₂ saturating the fluid and kicking out the CO₂) and CO₂ release.

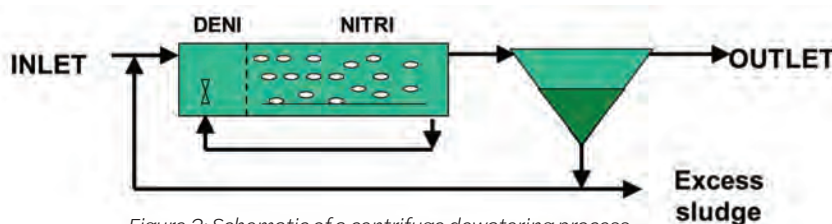


Figure 2: Schematic of a centrifuge dewatering process



Figure 1: Dewatering centrifuge



Figure 3: ARA Wüeri centrifuge with deposits (top) and without (bottom)

INNOVATION

The ROPUR RWI®-8000 was developed using state-of-the-art analytical techniques like laser-focused beam reflectance measurement, which in real-time can count the number of particles but also segment the particles according to their size.

Actual sludge samples from the ARA Wüeri in Regensdorf were analyzed by adding a few doses (in ppm) of ROPUR RWI®-8000 to the sludge water exposed to a CO₂ degassing. Upon dosing, the number of particles immediately reduced by 99.4%. The same method was applied to evaluate the optimal dosing rate for ROPUR RWI®-8000, which yielded rates ranging between 25 to 50 ppm.

The WWTP at ARA Wüeri uses ROPUR RWI®-8000 daily for its sludge dewatering process with great success, effectively inhibiting the Struvite scale from plugging or cementing inside the centrifuge and subsequent mother liquor pipes. Furthermore, the cleaning frequency was reduced by a factor of four, as shown in Figures 4 and 5 below.

ROPUR RWI®-8000: THE IDEAL REFERENCE

Based on the latest generation of ion scavenging molecules effective at low dosing value, lab studies show that the ROPUR RWI®-8000 prevents Struvite formation for four hours after dosing, allowing the dewatering process to occur efficiently. Compared to similar chemicals on the market, ROPUR RWI®-8000 expressed the most excellent efficiency at 25 and 50 ppm dosing rate, as shown in Figures 6 and 7.

Additionally, ROPUR RWI®-8000 performs well in wide pH deviations, minimizing issues regarding the remaining CO₂ / Hydrogenocarbonate ion present in the mother liquor. Studies further revealed that ROPUR RWI®-8000 keeps all potential Struvite particles as small as 10 µm in size, which is a remarkable achievement. Users report significant savings in costs and simplification of the wastewater treatment process.

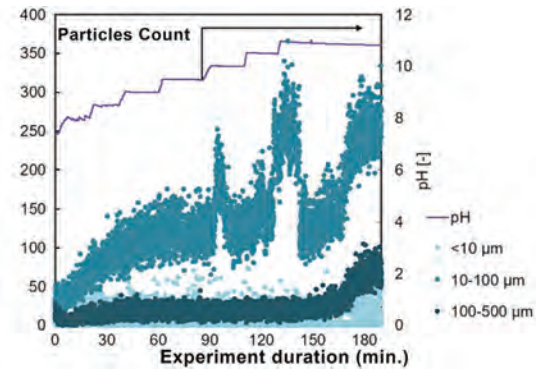


Figure 4: Before ROPUR RWI®-8000 is dosed

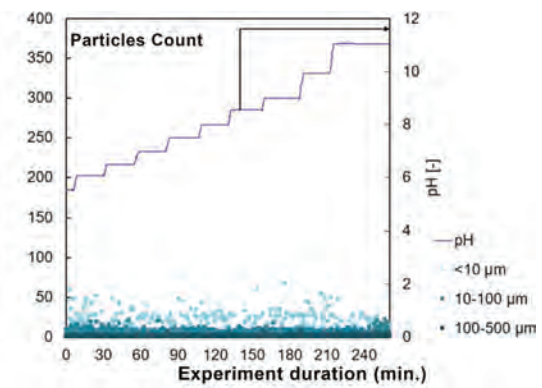


Figure 5: After ROPUR RWI®-8000 is dosed

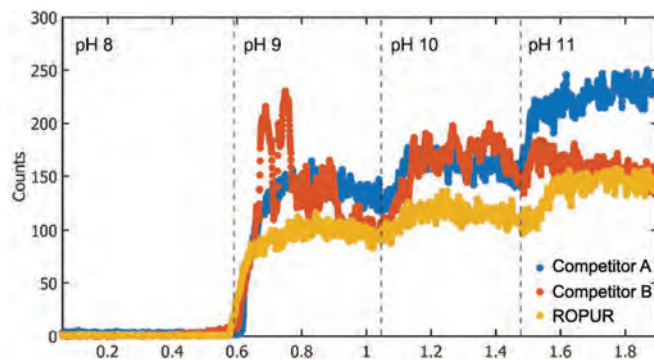


Figure 6: Particle counts in the range between 10 and 100 µm over time in SWW containing 25 mg/L of antiscalants from competitors A, B and ROPUR RWI®-8000; vertical dashed lines represent the time point when 12M NaOH was dosed for pH adjustment.

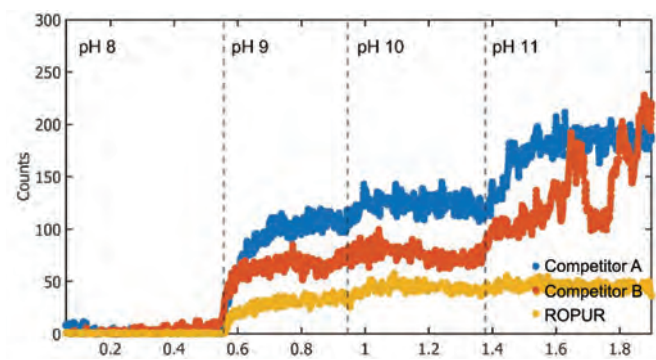


Figure 7: Particle counts in the range between 10 and 100 µm over time in SWW containing 50 mg/L of antiscalants from competitors A, B and ROPUR RWI®-8000; vertical dashed lines represent the time point when 12M NaOH was dosed for pH adjustment.

TORAY MEMBRANE EUROPE AG (TMEU)

Grabenerstrasse 8b, Muenchenstein 1 CH-4142, Switzerland

www.water.toray www.ropur.com www.csmfilter.com
info.tmeu.mb@mail.toray +41 61 415 8710
[LinkedIn](#) [YouTube](#)

Marks designated with a ™ or ® are trademarks of Toray Industries, Inc.

All information presented herein is believed reliable and in accordance with accepted engineering practices. Toray makes no warranties as to the completeness of this information. Users are responsible for evaluating individual product suitability for specific applications. Toray assumes no liability whatsoever for any special, indirect or consequential damages arising from the sale, resale or misuse of its products. © 2021 Toray Industries, Inc. Subject to change without notice.

